

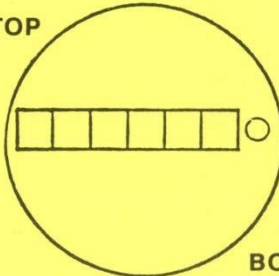
Highridge Water Authority reads large commercial and industrial customer meter monthly. Small commercial and residential customers are read bi-monthly, or every other month. We make every attempt to read your meter to avoid inaccurate estimated bills. There are some occasions when your meter reading is estimated. You will know if your bill is based on an estimated reading, if an "E" appears after the water consumption number on your bill.

Sometimes our meter readers will leave a card on your door if they are unable to read your meter. We ask that you read your meter and return the postcard promptly.

Name _____ Time: _____
Acct. No. _____ Date _____
Address _____

Our meter reader called today but was unable to gain admittance. Please insert reading of water meter in the blocks and mail the card.
Failure to return card promptly will result in estimated bill!

TOP



BOTTOM

**PLEASE READ
AND
MAIL TODAY**

If Any Questions Call:
(724) 235-2900
(724) 459-8033

Reading your meter on a regular basis is an important water conservation tool. To track your water consumption, read your meter and write the reading on a calendar on daily, weekly or monthly intervals. If you have any questions understanding the reading, please call our office and we can assist you.

Most meters are also equipped with a leak detection dial. This dial rotates when water is passing through the meter. If you see the dial moving, even if it is moving very slowly, this means there is water being used in the home. Even slow leaks can become very costly over a period of time, so that is why it is important to check your meter frequently.

Many customers often ask, "my water bill is too high, my meter must be bad?" A meter is a mechanical device much like a motor. After a time, the device slows down until it will not function any more, completely stops and a meter change is necessary. Just like an aging automobile, with many miles, they never run better and faster after 100,000 miles.

Many types of meters are installed through our system. Some of the most common are explained and pictured below:

Sensus meter – The sensus leak detection dial is the round red dial below the meter reading. One turn of the dial is equivalent to 10 gallons. Therefore if you have a leak and in 15 minutes, the dial turns one revolution, in 1 hour you have used 40 gallons. Over a month, this would equate to around 28,000 gallons of water.



Sensus meter

ABB meter - The ABB leak detection dial is the round clock-like dial below the meter reading. One turn of the dial is equivalent to 10 gallons. Therefore if you have a leak and in 15 minutes, the dial turns one revolution, in 1 hour you have used 40 gallons. Over a month, this would equate to around 28,000 gallons of water. The small triangle also registers a very slow usage.



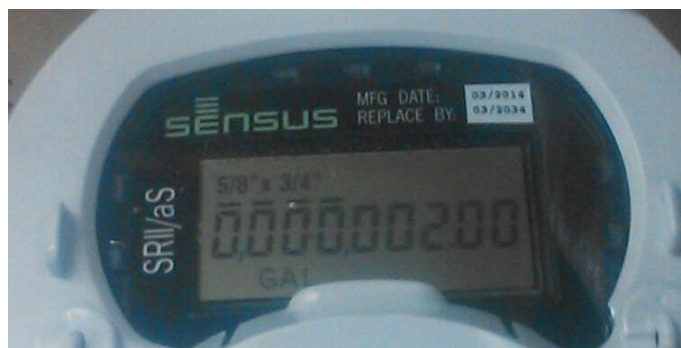
ABB meter

Neptune meter - The Neptune leak detection dial is the round clock-like dial surrounding the meter face. One turn of the dial is equivalent to 10 gallons. Therefore if you have a leak and in 15 minutes, the dial turns one revolution, in 1 hour you have used 40 gallons. Over a month, this would equate to around 28,000 gallons of water. The small triangle also registers a very slow usage.



Neptune Meter

Sensus IPERL OR ACCUMETER – The new Sensus meters are the first in the Highridge system that have a digital display. To read your water meter, simply open the hinged lid on the top of the meter. The number that first appears on the display is your meter reading. By closing the hinged lid and reopening the door, the meter will display current gallons per minute being used. For leak detection, simply pay attention to the last two digits on the meter. These meters read down to a 1/100 of a gallon, so by watching the digits to the right of the decimal point, you can easily determine small flows of water.



Sensus IPERL OR ACCUMETER